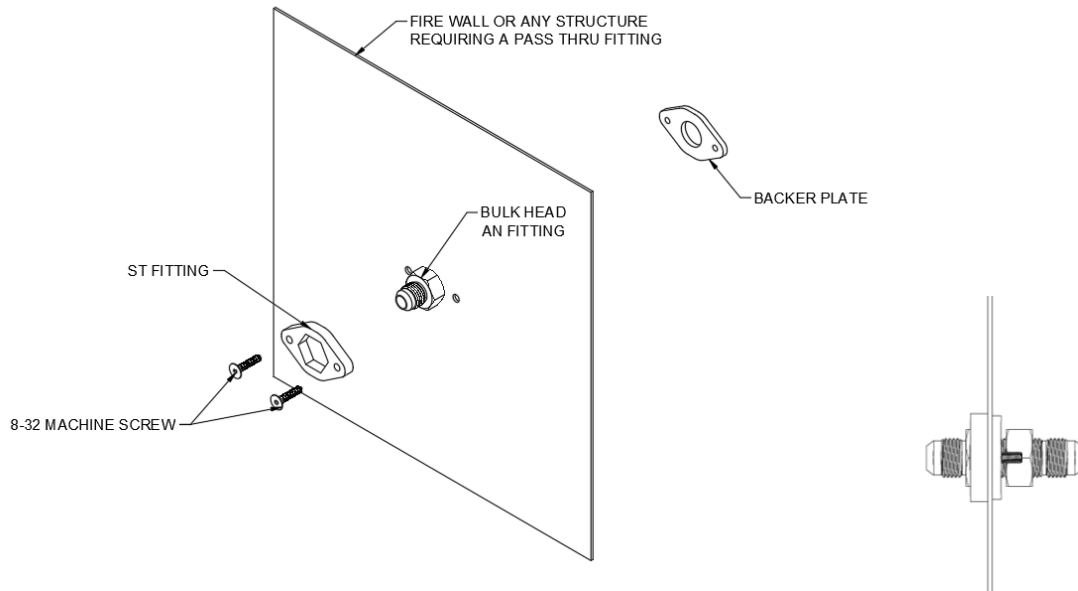
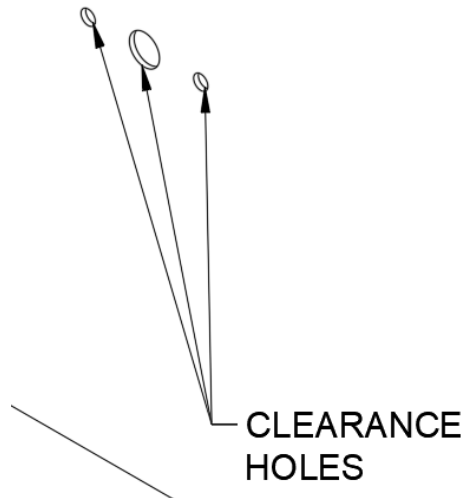


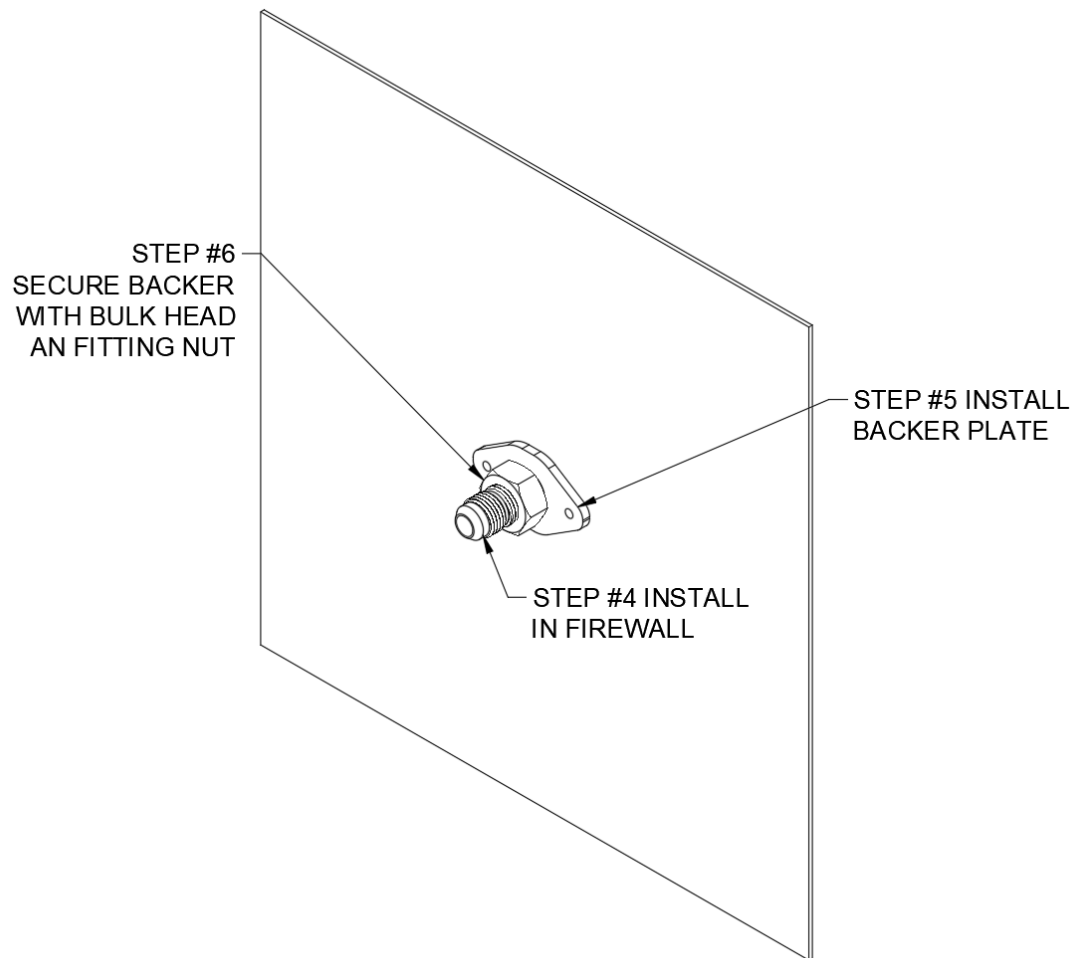
ST AN Fitting installation (with backer plate)



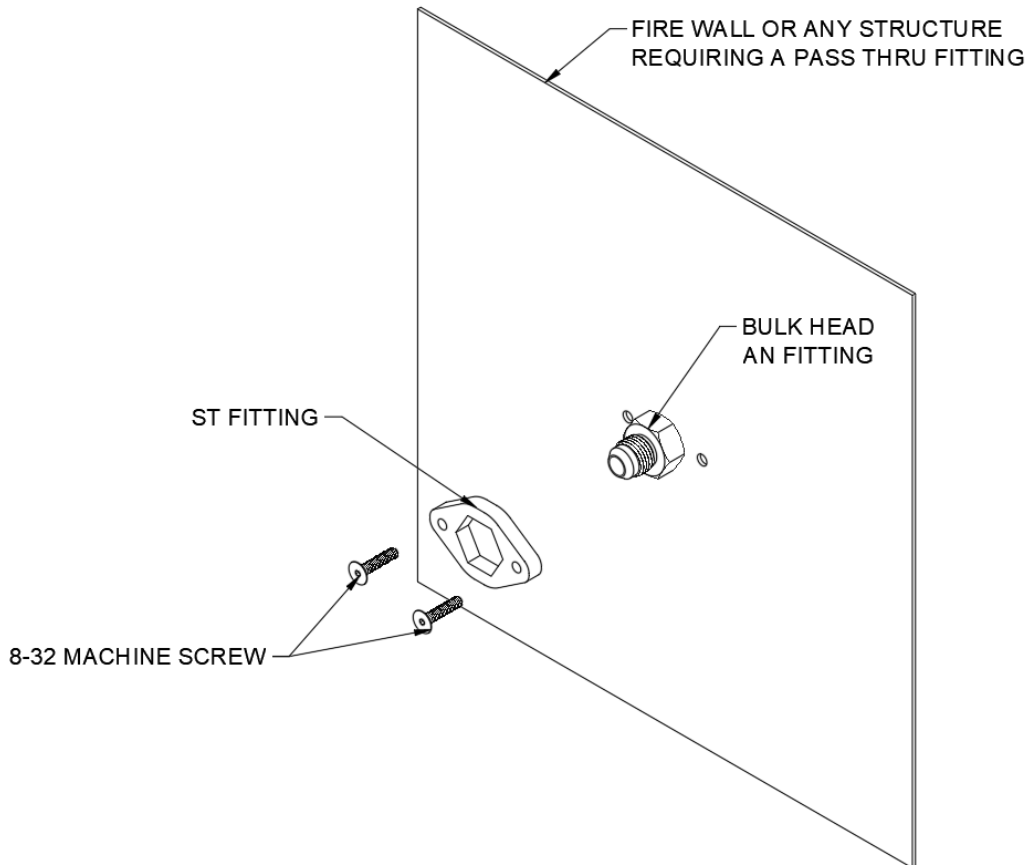
1. Find a location on the firewall where the ST fitting is to be installed.
 - a. Note: *On composite fire walls pick an area with less than 1/2" of thickness when using a standard AN bulk head fitting. Any area thicker may require a different fitting or modification to the firewall to get the fittings to fit*
2. Use the provided sticker or drawing to locate and create clearance holes for the AN fitting and the fasteners.
3. If using a nut plates, install & rivet the nut plates in at this time



4. Slip ST thru the fire wall
5. Place backer plate thru the bulk head AN fitting
6. Install the bulk head AN fitting nut as shown in the below image aligning the backer plate with the clearance holes.



7. Once the holes in the backer plate are aligned with the holes drilled in STEP 2, snug the AN bulk head fitting down.
8. Install ST fitting by slipping it over the bulkhead AN fitting & use the provided 8-32 machine screws (apply Loctite) to secure the ST fitting with the backer plate.
9. Properly tighten AN fitting nut once the ST fitting is secured



10. This completes installation of the LTF fitting. Lines may now be attached to the bulk head fitting and do not require a 2nd set of hands to install and uninstall lines.

